



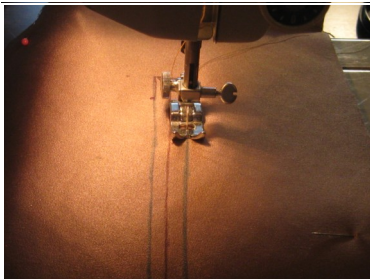
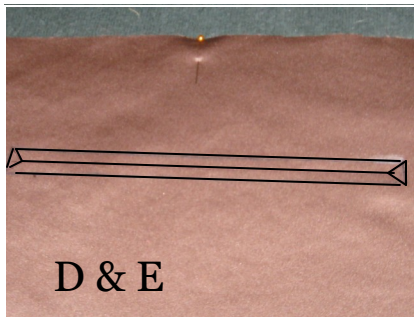
How-To Make a Zipper Pocket

Tip: Stitch top of zipper tape together before installing

- A. Apply interfacing, then baste or pin lining to wrong side of selected flap piece.
- B. Measure the length of the zipper teeth (see white lines) and the width of zipper (side to side).

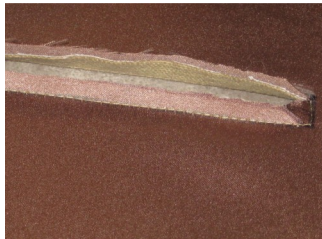


- D. Mark a rectangle using the measurements : L x W
- E. Next, mark a solid line down the middle with a triangle at both ends.



- F. Stitch the OUTLINE of rectangle ONLY.

G. Using sharp scissors or seam cutter, cut the solid line in the middle and triangle lines. Do NOT cut too close to the stitched outlines!



- H. Gently press cuts open to reveal a small rectangle. Press as necessary to smooth.

I. Pin or baste zipper with teeth facing right side (up) to wrong side of flap edges. Stitch zipper tape to edges. Turn piece over and stitch on the outside as shown below.



J. Stitch zipper in place with 1/8" seam allowance, using zipper foot.



K. Stitch zipper hood just above stitch line on top of zipper, assuring it is centered over zipper.



L. Continue with remainder of project...